

## SEARCHERS BOARD OFFICERS

- President: Robin Larzelere
- welcomehomestudio@gmail.com
- 1st VP: Gwen Sharp
- 2nd VP: Steve Duncan
- Director: Kim Strnng
- Secretary: Jenny Rohl
- Treasurer: Sue Gevedon
- Federation Delegate: Nancy Bird
- Committee Chairpersons
- Editor: Linda Horn
- Historian:
- Hospitality: Lorri Renck
- Library: Inez Flaugh
- Veteran Liaison :
- Website: Steve Duncan
- Shop Chairman: Charles Walker
- Show Chair: Margaret Hogarth

## IN THIS ISSUE

Field Trips	4
Club Meetings	2
Upcoming CFM Shows	10

## POINTS OF INTEREST

## FIELD TRIPS

## GENERAL MEETING

## SPEAKERS

# The Rock Slab News

VOLUME 59, ISSUE 5

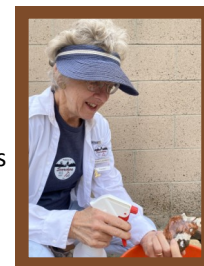


MAY 2022

## The President's Message

Greetings Searchers,

In-person meetings are getting to be more common, and our general meeting is attracting over 30 people for the last two months. Walt Lombardo's presentation about diamonds, and about a recent meteor discovery at a Long Beach constructions site, make in-person attendance "insider information" events.



Show and Tell has been added to every general meeting. John O'Conner brought a colorful, hand-made light box to show off delicate rock samples, and Charles Walker brought a freshly dug, excellent quality trilobite, he prospected at the last field trip. Richard Brewbaker entertained with stories of barite crystals dug from the Palos Verdes peninsula when he was young, and sold to local shops. I invite members to bring something of interest, old or new. Since I am a new member, I appreciate the club members' expertise. It is a rich source of learning and inspiration.

Members are the real treasure in the Searchers. As the club says farewell to Robert and Sharon Burson, and Doug and Inez Flaugh, we need to invite new members to meetings, and have fun! Like these members have. If you attend the Show, bring a new person, and they will see the comradery, as well as the expertise that Searchers enjoy. And maybe, magically,...the door prize fairy will draw the new person's ticket!

Robin

## Searchers Annual show. April 30 - May 1


**Searchers Society**
  
 61st Annual  
 Gem, Mineral and Jewelry Show  
 Free  Gratis  
 Brookhurst Community Center  
 2271 W. Crescent Ave, Anaheim, CA  
 Saturday, April 30th, 2022 / hours 10am - 5pm  
 Sunday, May 1st, 2022 / hours 10am - 4:30pm  
[www.searchersrocks.org](http://www.searchersrocks.org)





See Page 8

Check out our "new" Facebook page:

<https://www.facebook.com/groups/564049648337138>

## Searchers Club Meetings

Board Meeting- **May 3rd**

Member Meeting- **May 10th** in the Anaheim Community Center

### Searchers board meeting April 5, 2022 in person at the Anaheim Community Center

The meeting began at 6:30 PM. Robin Larzelere, Charles Walker, Nancy Bird, Sue Gevedon, Margaret Hogarth, Gwen Sharp, Jenny Rohl and Steve Duncan.

S-1 100 State of CA Corporations status is renewed for 2022 and 2023.

Zoom meetings: Board agreed to have zoom meetings available every month, then post the meeting i.d. on the home page of [www.searcherocks.org](http://www.searcherocks.org). In order to do this we need a cohost for the meeting to manage the computer/phone used to Zoom the meeting Margaret Hogarth volunteered to do this.

Show and tell approved as a trial for the May meeting. An invitation will appear in the May Slab.

Wine certificate donations to Show were approved. We will auction them off.

STEAM event was a success. We had between 150 and 200 people at the booth John Connor was excellent with the children. Robin Larzelere, Elaine Foster, Margaret and Bill Hogarth also participated. Rings were made for the participants.

The May field trip will be to Lavic siding. We will be publishing this field trip at the show to attract new members to the club. The April field trip is posted on the website.

CFMS Representative, Nancy Bird, will attend the show and volunteer at May CFMS event in Lancaster, CA. Nancy will need a promotional piece to hand out at the show.

Show Chair, Margaret Hogarth, reported that Bob Tanner will pick up and drive the lift-gate truck for the show. Tables have been ordered. Joann has adopted the goodie bag production. Geode breaker has yet to be tested Margaret will take care of it this week.

Shop Chair, Charles Walker, provided the following update:

- Diamond Slab Saw in Workshop – \$65 part ordered, 6-8 week backorder
- Air pumps replacements – Robin volunteered to research and buy.
- The new assistant shop chair is Caleb Guyer
- The new Shop Maintenance notebook will be implemented.

Doug Flaugh is going to donate his maps for field trips.

### Searchers Member Meeting- April 12, 2022 in person at the Anaheim Community Center

The meeting began at 7:00 PM.

John Connor organized the ring making at the STEAM event and Veronica Purpura ran half a table at the Imaginology event.

Steve Duncan, Jimmy Peterson and Charles Walker helped with the Cary family rock sale. In addition, Jim Thorpe and Mike Gevedon helped move the rocks afterwards.

The CFMS show is being held at the Antelope Valley Fairgrounds in Palmdale May 6-8. Nancy will represent our club at Club Central on Saturday afternoon. The hand out for our Club was distributed for all to see.

Share and Tell: Next month we will have a share and tell at the general meeting. Bring a project or special rock to the meeting to present to the attendees for 3 minutes.

Show: We need people to tumble rocks and donate prizes for the show. There is an exhibit case available for members. We also need volunteers to help with setting up, running and tearing down the show. We also need volunteers during the show to run the various activities.

The meeting was adjourned at 8:45 PM.

[Continued on next page.](#)

# Searcher Presenters and News

## May Speaker: Jeffrey Dengrove

Jeffrey Dengrove - I started seriously collecting rocks 16 years ago when I joined the Del Air Rockhounds in the San Fernando Valley. I am currently the permanent Vice President and also the field trip chairman. I have been tumbling for about 15 years. This talk is about bullet points and tips for successful tumbling and includes a discussion with the attending members with their own experiences and tips.



### Here are some websites about tumbling:

<https://rocktumbler.com/>

<https://rocktumbling.co/beginners-guide/>

<https://rockhoundresource.com/how-to-tumble-rocks-get-great-results-every-time/>

<https://www.rockseeker.com/how-to-use-a-rock-tumbler/>

### A great site for supplies and information: ( there are many others)

<https://littleredstore.com/>

### Member Minutes continued

Our speaker for the evening was Walt Lombardo. He owns Nevada Mineral & Book Company, a natural history gallery and earth science bookstore located in Orange, California.

The topic of the talk was "diamonds in North America". Diamonds are old and were formed between 3.2 and 2.4 billion years ago at great depths. Most diamonds are found either in kimberlite or lamproite.

Commercial mining of diamonds occurs mainly in the ancient rocks of Canada. The first production began in 1997 by a partnership of Rio Tinto and Aber Diamonds.

Diamonds in the US are found in many places but are not mined commercially. The most known location is in Arkansas at the Crater of Diamonds, where people can dig for diamonds for a fee. Diamonds have even been found in the gold mining regions of California.

### Saw Oil Available

The club supplies saw oil at a good price. It is located at Jim Peterson's home. Bring your own 5 gallon container. The cost is \$60 for 5 gallons. Call 714 904-8573 and make a check payable to "Searchers"

## Upcoming Fields Trips

### The May Fieldtrip

May 14 and 15

Lavic Siding Saturday and the Cady Mountains Sunday.

The Saturday portion at Lavic Siding is specifically aimed at new or non-members that we plan to recruit at the show. We will need some experienced rockhounds to join us, and we will then pair up newbies with experienced rockhounds for educational purposes. Here is your chance to create a new rockhound.

Sunday we can choose some Cady sites.

The campsite is in the bowl at Lavic Siding (the same place as Doug's previous trip). It is accessible by all vehicles if driven carefully. To get there exit I40 East at Hector Rd, turn right at the end of the exit, and then left (east) on Nat'l Trails Hwy (Old RT 66). Go a little over 9 miles, and the road makes a sharp left turn across the freeway. Do not make this turn, instead turn right onto the dirt road, this is Lavic Siding road. Take the middle fork for a half mile, than turn left and go down a small hill into the bowl to the camp. There will be Searchers signs to help you. This is a dry camp, bring everything you need. Don't forget sunscreen and lots of water also don't forget your hat and rock tools. The weather could be hot, be prepared. Saturday night we will have a potluck for those who wish to participate. There is good collecting at the campsite for small tumbling size pieces of jasper.

Saturday's trip should be accessible by most vehicles if driven carefully. If you show up at camp with your low slung sports car we will find you a ride with a beefier vehicle. Sunday's trip will require a high clearance vehicle.

Trips will leave from camp at 0830 both days

Steve Duncan will lead this trip, maybe I will wrangle a co-leader for the Cady's part. If you have any questions call me at 7147247102 or email me at mrsteveduncan2@gmail.com.

#### June

Too hot.

Monthly Field trips should resume in September. We may look for a hot weather trip sometime during the summer. There are rumblings about a Utah/Idaho/Oregon trip?



### April 9th to 10th Field Trip Report Trilobites + Chapenite

Nine stalwart Searchers braved 100° weather out at Cadiz for the April field trip. Both Friday and Saturday were over 100°, Sunday it cooled to a balmy 90°. Unfortunately the collecting did not favor us this weekend, Saturday's trip to Siam siding for Chapenite yielded only tumbling size pieces, and Sunday's trilobite trip only yielded a few small trilobites. Charles did find a couple of plates with multiple trilobites which were quite nice. Both sites have known potential; we may need to rethink our attack philosophy for the next trips.

Having said that, the trip was as usual great fun for all, we got to see some beautiful desert scenery, had another great potluck (including brownies and ice cream, way to go Gwen), and got a chance to prove how well sand recovery boards work retrieving a stuck truck.

Only one more trip before it we slow down for the summer, that will be the Lavic Siding trip in May which we hope to open up to some newbies we attract at the show. This plan is detailed elsewhere. There have been some discussions about hot weather trips for the summer, but so far nothing has firmed up.

Steve



For field trip information contact: Steve Duncan  
mrsteveduncan2@gmail.com  
714 724-7102







## THE GEMSTONE JADE

Jade is best known as a green ornamental stone. Its colors varies from light to dark green, but it may also be other colors such as white, gray, and purple. Jade is actually the gemstone name for two different mineral forms, Jadeite and Nephrite. These two minerals can be identical in appearance and are similar in their physical properties, and until modern times no distinction was made between the two different types of Jade. While Nephrite is generally only green, cream, or white, Jadeite colors can

### ALL ABOUT

Jade has been an important gemstone throughout history, especially among the Chinese and Latin American cultures. Ancient carved figures have been found from these societies, where the value of Jade was sometimes worth even more than of Gold.

The name Jade is derived from the Spanish phrase "Piedra de Ijada", which means "Stone of the Hip", as this stone was used as a metaphysical protection against kidney disease by the ancient societies.

Jadeite is composed tightly packed microscopic crystals, and Nephrite is composed of extremely dense mineral fibers that are interlocked and very tough. Of the two Jade forms, Nephrite is more softer and more prone to scratches, and Jadeite is not as dense and is more prone to chipping. Of the two, Nephrite is the more common form. Jadeite is becoming increasingly difficult to obtain due to a trade embargo emplaced by the U.S. against Mynamar (Burma), the primary source of Jadeite.

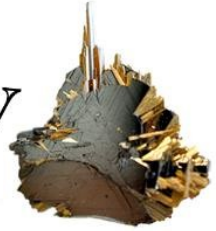
Jade gemstones are often multicolored or mottled. A white and light green color combination is a very common form, and darker stones usually have black mottling. Uniformly colored stones are less common. Deeper colored stones are more valuable, and the most valuable form is called Imperial Jade, which is emerald-green in color and translucent.

From: [https://www.minerals.net/gemstone/jade\\_gemstone.aspx](https://www.minerals.net/gemstone/jade_gemstone.aspx)





# Searchers Society



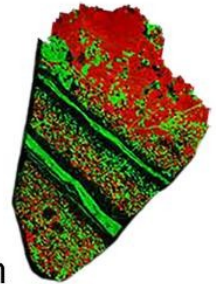
## 61st Annual Gem, Mineral and Jewelry Show



Free



Gratis



Brookhurst Community Center  
2271 W. Crescent Ave, Anaheim, CA

Saturday, April 30th, 2022 / hours 10am - 5pm

Sunday, May 1st, 2022 / hours 10am - 4:30pm

[www.searchersrocks.org](http://www.searchersrocks.org)



## Searchers Gem and Mineral Society

Free Admission & Parking! ¡Entrada Libre y Aparcamiento!

- Door Prizes
- Gemstones-Minerals
- Silent Auctions
- Demonstrators
- Exhibits
- Gold Panning
- Dealers
- Children's Activities



Brookhurst Community Center  
2271 W. Crescent Ave, Anaheim, CA



- Premios
- Piedras Preciosas
- Subasta Silenciosa
- Demostraciones
- Exposiciones
- Lavado de Oro
- Vendedores
- Actividades para Niños





## Show News

### How to Help at Our Show

We are a charitable organization based on volunteers, and the show is our major fundraiser. There are many ways to help at our show! Set up is 8 a.m. to noon Friday, April 29, 2022. Take down is after 5 p.m. on Sunday, May 1, 2022. We must vacate the building Sunday evening and re-load our show supplies onto the truck. We need lots of bodies to help with these tasks. If you have a dolly, mark your name on it and bring it.

If you can stand and walk for a couple of hours, sign up to do Security. Our dealers love our show because we provide such good security. Not only do we keep people and things safe, we give bio breaks for single dealers and demonstrators, keep the Silent Auction folks in water, snacks and breaks, and help watch the patio gate. If you have a radio, we will be actively using those this year.

We have multiple sit-down jobs: raffle tickets, membership, grab bags, ring-making, hospitality. If you have a Square or know how to operate it, please help at our tables that take in money. We need help with our new activity, geode cracking. We have a cracker, but it takes some patience and skill to break open a geode. We need a person to operate the cracker and a person to spot and help with customers.

Bring prizes big and small for all ages for the Hospitality table and grab bags.

We will try providing hammers on the patio for kids to break open their dinosaur eggs and small nodules that are in their goodie bags. Help with that if you can.

We'd like to borrow your shade canopy if the weather is hot for the food tables out front. Be sure to mark your name on it and secure any covers. We will be having a food truck both days at the show. I usually spend the whole 3 days at the show and vary my time between standing and walking tasks. Please be generous with your help! Questions? Call Margaret, [hogarth.m@gmail.com](mailto:hogarth.m@gmail.com), 909-815-3045.



# Upcoming 2022 CFMS Gem Shows

## 2022 Shows

### April 30 – May 1, 2022 – Anaheim, CA

Searchers Gem & Mineral Society  
Brookhurst Community Center, 2271 W. Crescent Ave., Anaheim, CA 92801  
Hours: Saturday 10 AM – 5 PM, Sunday 10AM – 4:30 PM

61st Annual Searchers Mineral, Gem and Jewelry Show

Fun activities for kids! Free. See rocks, gems, minerals, fossils, rough, slabs, gold panning, door prizes, tools, supplies and exhibits.

Contact: (909) 815-3045, searchersgemandmineral@gmail.com

Website: <https://searchersrocks.org>

### May 6-7-8, 2022 – Lancaster, CA

#### CFMS Gems, Minerals, Fossils & Jewelry Show

Antelope Valley Fairgrounds, 2551 W Avenue H, Lancaster, CA 93536

Hours: Friday, Saturday 9 AM -5 PM, Sunday 9 AM – 4 PM

Gems, Minerals, Fossils, Jewelry, Demonstrations, Exhibits, Dealers, Kid's and Family Activities. Free parking and Free Admission.

Contact:

Bob Backus (661) 526-3564, email: [lbackus@aol.com](mailto:lbackus@aol.com)

Susan Chaisson-Walblom (661) 406-0143, email: [slchaisson@yahoo.com](mailto:slchaisson@yahoo.com)

More information coming!!

### May 6-7, 2022 – Yucaipa, CA

Yucaipa Valley Gem and Mineral Society  
Yucaipa Blvd and Adams Street, Yucaipa CA 92399

Hours: Friday 6 PM – 10 PM, Saturday noon – 10 PM

The YVGMS annual show features great vendors, geode cracker, kids' activities, raffle, and club store. The YVGMS show is part of the Yucaipa city Music and Arts Festival with music, various local artists, kids' zone with rides and jumpers, other craft vendors, food vendors, and a beer/wine garden. It is a

fun time for the entire family.

Contact: (909) 794-0731

Website: <http://yvgms.org>

### May 7-8, 2022 – Jackson, CA

Amador County Gem & Mineral Society  
Kennedy Mine Gem & Craft Show, 12594 Kennedy Mine Rd., Jackson, CA 95642

Hours: Saturday 10 AM – 5 PM, Sunday 10 AM – 4 PM

Contact: (916) 698-9853

Website: <http://www.amadorgemandmineral.org>

### June 11-12, 2022 – Escondido, CA

Palomar Gem and Mineral Club  
Palomar Gem and Mineral Show  
California Center for the Arts, 340 N. Escondido, Escondido 92025

Hours: Saturday 10 AM – 5 PM, Sunday 10 AM – 4 PM

Faceted gems, Slabs, Cabochons, Unique custom jewelry, Rare and common minerals, Fossils, Rough, Beads, Crystals, exhibits, Demonstrations, prizes.

Contact: (425) 281-6218, [tonifloyd41615@gmail.com](mailto:tonifloyd41615@gmail.com)

Website: <http://palomargem.org>

### July 16-17, 2022 – Culver City, CA

Culver City Gem & Mineral Society  
Fiesta of Gems

Veterans Memorial Auditorium, 4117 Overland Ave., Culver City, 90230

Hours: Saturday 10 AM – 6 PM, Sunday 10 AM – 5 PM

36 vendors plus exhibits, demos, workshops and games. Fun for the whole family – Free admission and free parking.

Contact: [BradSmithJewelry@gmail.com](mailto:BradSmithJewelry@gmail.com)

Website: <http://CulverCityRocks.org/fiesta.htm>

### August 20-21, 2022 – Arcadia, CA

Pasadena Lapidary Society  
"Inspiration Unearthed", 62nd Annual Tournament of Gems

Arcadia Masonic Center, 50 W. Duarte Rd., Arcadia

Hours: Saturday 10 AM- 6 PM, Sunday 10 AM – 5 PM

Contact: Ellen Ferrell 1-727-512-0381

Email: [ellenbf2007@aol.com](mailto:ellenbf2007@aol.com)

Website: <https://www.pasadenalapidary.org>

### September 10-11, 2022, Reno, NV

The Reno Gem & Mineral Society, Inc.  
Jackpot of Gems

Reno Convention Center, 4390 S. Virginia, Reno, NV 89502

Hours: Saturday 10 AM – 5 PM, Sunday 10 AM – 4 PM

Contact: [sailondan55@aol.com](mailto:sailondan55@aol.com)

Website: <http://www.renogms.org>

### October 8-9, 2022 – Los Altos, CA

Peninsula Gem and Geology Society  
Los Altos, CA 94022

Hours: Saturday and Sunday 10 AM – 5 PM  
Recreation with Rocks

Contact: 650 575-3144

Website: <http://pggs.org>

### October 9, 2022 – Fallbrook, CA

Fallbrook Gem and Mineral Society  
Fall Festival of Gems & Minerals

123 W. Alvarado Street, Fallbrook CA 92028

Hours: 9 AM-4 PM

Vendors: apply by August 1, 2022. Free booths for nonprofit organizations promoting minerals, fossils or gems.

Contact: (760) 728-1130, [info@fgms.org](mailto:info@fgms.org)

Website: <http://www.fgms.org>

## May Birthstone: Emerald



For a more complete listing of shows go to web-site: [www.cfmsinc.org](http://www.cfmsinc.org)

# Searchers Gem & Mineral Society

## General Information



Check our website for unexpected changes in schedule!

[www.searchersrocks.org](http://www.searchersrocks.org)

**General Meetings:** 7 PM, 2nd Tuesday of each month, Jan - Nov

**Board Meetings:** 6:30 PM, 1st Tuesday of each month, Jan - Nov

**Workshop:** Thursday 5:30 to 10:00 PM and Saturday 2:30 to 7:00 PM

**Location:** Anaheim Downtown Community Center  
250 East Center St.  
Anaheim, CA 92805

**Mailing Address:** Searchers Gem & Mineral Society, Inc.  
P.O. Box 3492  
Anaheim, CA 92803

**Website:** [www.searchersrocks.org](http://www.searchersrocks.org)

**Membership Dues:**

Individual	\$25
Couple	\$35

**Valid Jan.1-Dec.31** The dues are prorated for new members. If new members sign up from October to December, their dues are good for those months, plus the entire next year.

**Bulletin:** Submissions due 3rd Friday of the month via e-mail to:  
[editor@searchersrocks.org](mailto:editor@searchersrocks.org).

**Bulletin distributed 1st week of each month. Mail exchange bulletins to the editor:**

**Searchers —Linda Horn Editor**

**P.O. Pox 3492**

**Anaheim, Ca. 92803**

**Charter Date:** April 20, 1958

**Affiliations:** California Federation of Mineralogical Societies  
American Federation of Mineralogical Societies



# THE NEVADA MINERAL & BOOK COMPANY

<http://minbooks.net/>

342 S. Tustin Street • Orange, CA 92866

Ph. 714-633-1549

Hours may vary, please call before coming.



## Tony's Lapidary Equipment Repair

**Tony Hempen**

Owner

26282 Calle Roberto

San Juan Capistrano, CA 92675

949-922-7271

themp2@yahoo.com