

**SEARCHERS BOARD  
AND CHAIRPERSONS**

- Slab Editor: Linda Horn  
anaheimsearchers@gmail.com
- President: Robin Larzelere  
anaheimsearchers@gmail.com
- 1st VP: Gwen Sharp
- 2nd VP: Rick Webber
- Secretary: Regina Tula
- Treasurer: Jamie Cassidy-Curtis
- Workshop Chair: Caleb Guyer
- Show Chair: Margaret Hogarth
- Webmaster:
- Federation Delegate: Nancy Bird
- Director: Sue Gevedon
- 



**IN THIS ISSUE**

- Field Trips** 4
- Club Meetings** 2
- Upcoming CFM Shows** 9

**POINTS OF INTEREST**

**FIELD TRIPS**

**GENERAL MEETING**

**SPEAKERS**

# The Rock Slab News

VOLUME 61, ISSUE 8

AUGUST 2024



**The Searchers next meeting:**

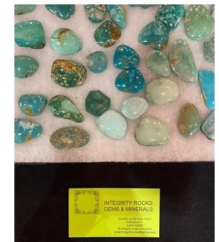
**August 13th 2024 7 p.m. Doors open at 6:30 p.m.**

## The President's Message

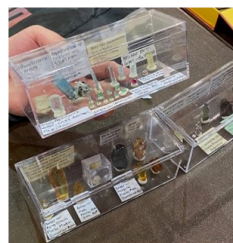
### Happy August Searchers,

Come on out to the Sunday, August 11 picnic, Craig Regional Park in Fullerton, 11 a.m. Shelter #1 (on the left as you enter behind the office. The club will provide plates, utensils, sodas and water. Please bring a potluck dish to share for 6. Email Gwen with your dish: [socalgeogal@yahoo.com](mailto:socalgeogal@yahoo.com)

From the July 9 "Buy Sell Show Tell" meeting: "thank you" to Jennifer Corbo for helping with the Silent Auction and for the motivated sellers and buyers who spread their items out on 13 tables.



Jeff Dekofsky with new display lights, Karen Kremer and Paul Malone at the fluorescents, Cabs by Daniel Tula



Rudy's Rare Rock Collection    The Silent Auction

Trim saw – Sold

After 11 months of repairs, the Workshop has the Enan working again. Thank you to Daniel Friend, Todd Richmond, Anthony Palumbo, Vince Morasco, Daniel Tula, Bruce Wight, Bill Tolman and Bob Larzelere.

Congratulations to Caleb Guyer, and Jhenya Mevnier! We all look forward to meeting the new, little rockhound soon!

**Searchers Summer Picnic...**this year, it is on Sunday August 11, Craig Regional Park in Fullerton, 11 a.m. [See page 7](#)

**Sincerely, Robin Larzelere, President**

## Searchers Club Meetings

Board Meeting- **August 6th at 6:30 P.M.**

Member Meeting- **August 13th** in the Anaheim Community Center

### Board Meeting Minutes, June 4, 2024

Present: Regina Tula, Robin Larzelere, Rick Webber, Sue Gevedon, Margaret Hogarth, Gwen Sharp, Jamie Cassidy-Curtis Nancy Bird absent.

#### 1. Consent Calendar:

A. May 7, 2024 Board Meeting Minutes, May 14, 2024 General Membership Meeting .  
[Approved unanimously .](#)

#### 2. Old Business:

Value of Edith Worak donation. Robin contacted Randy Otten, Lothar Vallet's business partner. Appraisal was for which stones have value, and which do not. Recording of meeting is in the google drive>donations>2024>Edith Worak donation. Randy stated: the faceted stones have no value, some of the opals have value and he selects those in the video about 10-15 opals. Caleb also gave estimates for some of the high-grade lapidary rough. The next step is to have Stan McCall give a price range for the 10 to 15 opals that have value. [Board to decide what to do with the opals and has been valued already. We need to find ways to market them. \(1\) closed bid and seal bids to purchase. \(2\) Silent auction for a high-priced item. Ask Stan if he would sell on consignment. At the July meeting, one group of high-grade stones can be silent auctioned. Take 3 high grade opals. We might ask Walt's wife and see what she and he say about the opals. The high grade rough Caleb will price for July 9 meeting as a test sample.](#)

#### New Business:

A. Buy headset and battery pack to use with the Downtown Center's room audio speaker to improve meeting presentations (\$600 appr. cost). [The board members offer Veronica and Karen K. to research the lapel microphone with the Brookhurst sound system and get back to the board with what works.](#)

3. **TEST WIX Vendor pages for online sign-up for the 2025 Show.** Robin and Katie Goodman created two new pages for the website. Subscription increases from \$192 to \$348. Robin will pay \$45 for the first two months of upgrade to make the two pages (no cost to the club while the test pages are reviewed). At the August board meeting, the board can decide to continue, or not. The club's subscription can be rolled back to \$192 at that time. [Vender process on line for future shows. Margaret, Steve, and Veronica can review pages and give input.](#)

- **Workshop Report: Caleb Guyer** June 13, Thursday, and June 15, Saturday, the Workshop will be asking members to come and do maintenance chores such as cleaning all the vinyl table cloths, balancing genies, or clean out saw oil from the saws. [Caleb Report: Five saws and a trim saw for six total saws for the workshop. Close shop down to clean out space in cabinet. There is an arbor that needs to be put in working condition, it would bring more people in for rough grinding without using a genie.](#)

[Attending Workshop for several sessions as a visitor, discussion regarding members need a liability form when using equipment, visitors cannot touch the equipment. We want to have a positive atmosphere in the workshop.](#)

## Searcher Presenters and News

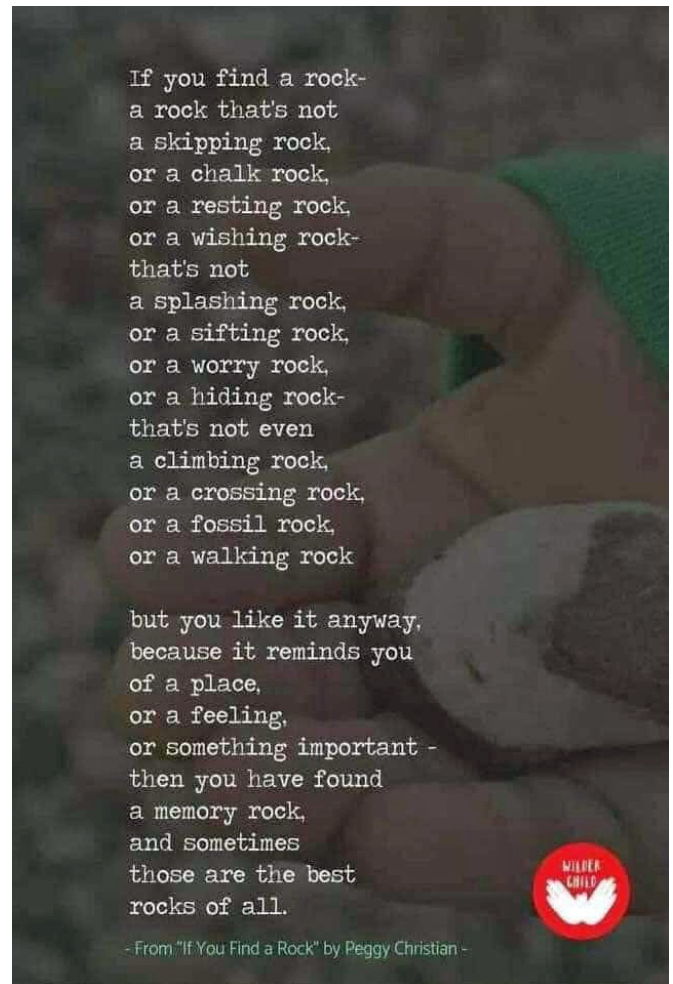
**August Speaker: Speaker: Margaret Hogarth**  
**Topic: Show Tips and Tricks with Prize Brainstorm**

**Tuesday, August 13, 2024, 7 p.m. Doors open at 6:30  
 for mingling and raffle ticket purchase.**



What is the Searchers show? Why is it important? What, exactly, goes into putting on the show? Searchers have been putting on an annual show for over 60 years. It is our club's main fundraiser and a major opportunity for our club to do outreach, attract new members, educate and get people excited about rocks and minerals. Margaret inherited a well-organized show system from previous Searchers, but it is worth reviewing regularly and brainstorming how to do things better, more efficiently and economically. We also like to take advantage of new technology and ideas. Does your club want to put on a show or do you want to improve your show? Come and join the discussion, pick up some tips and tricks, and celebrate the hard work of our dedicated show committee. We will also look at some inspiring prize ideas and have a brainstorm about how we can improve and diversify our show prizes. Join us!

Margaret has been a Searcher since 2007. She learned lapidary from Herb Beckman, was a dedicated workshop attendee for many years, and goes on every field trip she possibly can. She particularly loves the outdoors and being with creative friends who share the love of the outdoors.



### Saw Oil Available

The club supplies saw oil at a good price. It is located at Jim Peterson's home. Bring your own 5 gallon container. The cost is \$65 for 5 gallons to members. \$75 for non-members. Jim Peterson 714 904-8573  
 Call 714 904-8573 and make a check payable to "Searchers"



# Upcoming Searchers Field Trips

## Field Trip Copper World October TBD

We will be traveling to 'Copper World', an area in the Clark Mountain range, 35 miles west of Primm, Nevada. Campsite meeting: 8:30 a.m. on Saturday. You can collect at many mines within the area. The most notable being the Mohawk and Copper World Mines.

**Directions:** Head towards Las Vegas on I 15 for about 4 hours by car and 5 hours by RV. When you pass Baker, continue another 30 miles to the Cima Road exit. There is a Stuckey's store sign clearly visible from the freeway. At the stop sign turn left, which will take you over the freeway and to the Searcher's campsite which will be about 0.5 miles up on the left side.

'Copper World's mining history spans from 1868 to 1978, however the mines are inactive today. Malachite in veins and stringers (of basalt) give the effect of spiderweb turquoise in brown matrix. Copper King, Mohawk and other mines are the result of extensive diggings which produced lead, copper, silver, and gold, as well as hematite, pyrite, galena and zinc. Latest collections include Azurite, Malachite (blue), Chrysolite, Chrysocolla, Chalcopyrite (green), possibly even Smithsonite, Calcite, Sphalerite, Hemimorphite, Limonite, and Cerussite.

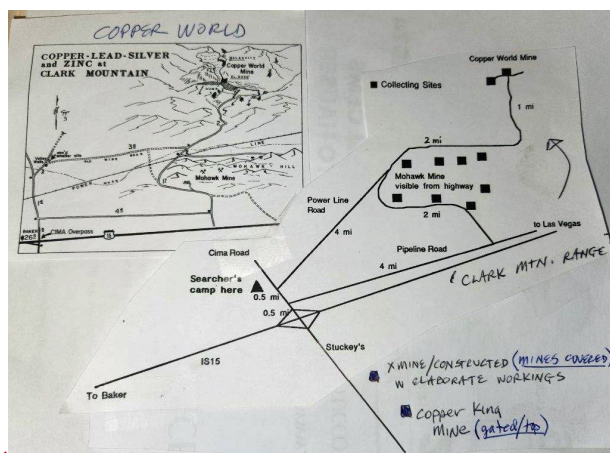
Note: Some minerals will only be found within mine tunnels but most can be found as smaller specimens on the abundant dumps. Club members will help identify specimens.

**What to bring:** Food, water, and wood. It is a dry campsite with supplies, restrooms, and gas nearby @ Stuckey's. Sunscreen, hats, and dress for the variable, desert weather. Tools: Flashlights, picks, chisels, sledgehammers, rope, gads, carry bags, etc.

**Road conditions:** Typical desert roads except for the last mile to the Copper World. Exploring beyond is a bit steep and rough. The Searchers camp is ok for Trailers or RV's.

Searchers Gem and Mineral Society assumes no responsibility for injuries or property damage due to accidents, carelessness, or Acts of God. Searchers and their guests assume all risks during club activities.

Rick Webber: [richwebb3245@att.net](mailto:richwebb3245@att.net)



## Future Trips

Hello fellow Searchers and friends.  
 Summer is cooking and will soon fizzle to cooler temps.

Like Lewis and Clark, we are explorers in search of geological wonders. Copper World, in the Clark Mtn. Range is upcoming. Another area in the Kingston Range yields Quarts and Amethyst points. South Cadys has numerous areas still waiting to be found. Where might there be other wonders out there, within range in southern Calif., Arizona, Nevada? Where would you like to go? With the help of many we can accomplish much more. I need you to research: on-line; through your own contacts, rock licking acquaintances or ask people that know of sites or have claims if they would allow us access. In pulling together our collective knowledge the possibilities are endless.

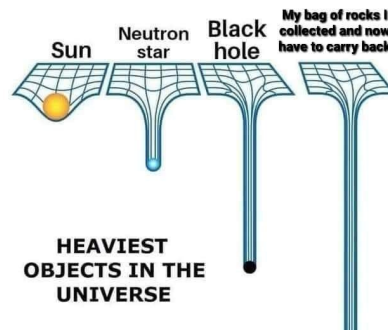
Send me your ideas, contacts, and or destinations and together we will conquer our dreams of Geological wonder and Lapidary craftwork. Time is of the essence. Let's do this together and enjoy the spoils of our cumulative efforts.

Searchers Field Trip team members :) Rick Webber e-mail [richwebb3245@att.net](mailto:richwebb3245@att.net)

Thank You

Cell 714 585 5606 text first, please

For field trip information contact: Rick Webber



## Camp Paradise 2024!

Now is the time to register for Camp Paradise. Organized by the California Federation of Mineralogical Societies (CFMS), this week-long lapidary camp has it all. Learn faceting, silverworking, lost-wax casting, chain mail, precious metal clay, enameling, beading, lapidary, soft stone carving, agate carving, dichroic glass, intarsia, and probably some other yummy skills. The camp includes food and lodging and is a blast. The cost is \$500 per person per week. What a bargain! It is located at 12725 LaPorte Road, Strawberry Valley, CA 95930. This is north of Sacramento in a dry forest. All rocks all the time, what could be better?

Week 1: August 18th to August 24th 2024

Week 2: August 25th to August 31, 2024

<https://cfmsinc.org/camp-paradise/>



## Iceland Rocks!

Here is a field trip few will get a chance to do. Margaret and Bill Hogarth recently came back from Iceland.

We went to beautiful Iceland recently. Like Hawaii, it is volcanic but the basalt was more gray and brown than black. There was little topsoil but interesting small plants, mosses and lichens growing on the rocks.

These formations were called trolls.



The basalt columns were so interesting here.



This incredible waterfall system was just upstream:



Near where the American plate is separating from the Eurasian plate the lava formations were so intriguing!



Many birds nest on Iceland. We were lucky enough to see arctic terns, eider ducks, puffins and a variety of gulls. I hope you get a chance to go!

Margaret and Bill Hogarth



## 2024 Searcher's Annual Potluck Picnic

Date and Time: Sunday, August 11<sup>th</sup> from 11:00AM to 3:00PM



**New Venue:** Craig Regional Park,  
3300 State College Blvd., Fullerton

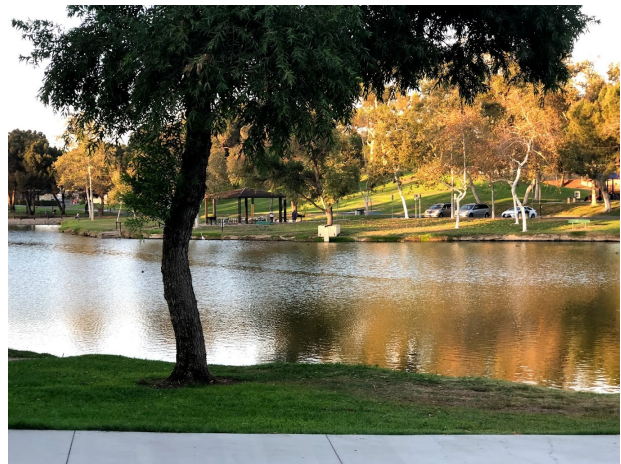
Shelter # 1

The club will provide plates,  
utensils, sodas and water.



Craig Park is located south of Imperial Highway, west of the 57 Fwy and on the east side of State College Blvd. Shelter #1 is located behind the park office as you enter. There is a \$5 fee at the entrance. Take the 1<sup>st</sup> left beyond the park office for as parking.

Please contact Gwen Sharp ([socalgeogal@gmail.com](mailto:socalgeogal@gmail.com)) to let us know how many will be in your party and what dish you will be bringing.

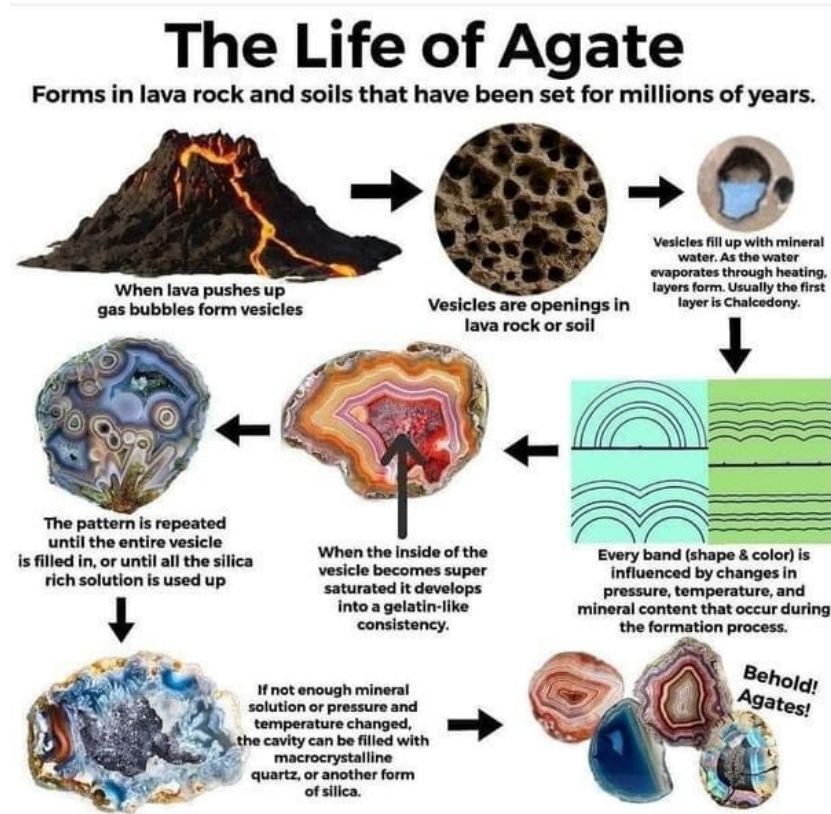


## Show News August

We are gathering nodules/geodes for the 2025 show. The club made quite a bit on the nodule/geode cracking, not so much the cracking, but using the trim saw to finish cutting those that had been prepped for the show by cutting 90%. I am seeking volunteers to cut 90% of nodules/geodes. I will bring some batches of 10 to meetings for people to pick up and cut. It is okay to do this in the club workshop. This is an opportunity for us to increase our income; I hope you will consider helping. If 10 people cut 10 each, we'd have 100 nodules/geodes to sell. Please pitch in!

We have received a nice donation of calcite crystals and amethyst crystals. These would be perfect for our \$5 grab bags. As you recall, we had 42 \$5 grab bags at the show that sold out by midday on Saturday. I'm looking for someone to help sew \$5 grab bags (I have a pattern and sample), and then we're looking for additional nice materials to put in the bags. Do you have too many shark's teeth? Or an abundance of small fossils or beautiful rocks? Please consider contributing. If we could put together 100 \$5 bags we could earn \$500!

I am sorry to say that we have lost long-term member John O'Connor from running our Wheel of Fortune at the show. John was super dedicated. He went to garage sales, thrift stores, and estate sales and would buy small toys to give out as prizes. He and Kendal completely covered the Wheel of Fortune (WOF) for the entire show weekend. We will need to replace him with a person or team. Do you do similar bargain hunting? Consider picking up small toys or special sparklies for WOF prizes. Please consider helping with this Searcher signature activity. And John, thank you! You will be sorely missed!





# Upcoming 2024 CFMS Gem Shows

**2024**

**August 2-4, 2024 – Nipomo, CA**  
 Orcutt Mineral Society  
 Nipomo High School, 525 N. Thompson Ave., Nipomo, CA 93444  
 Hours: Friday 10 AM-5 PM, Saturday 10 AM-5 PM, Sunday 10 AM-4 PM  
 56th Annual Rainbow of Gems: Over 60 rock, gem and fossil dealers including food trucks. Kid's booth, Treasure Chest with Raffle at 3:00pm on Sunday.  
 Contact: (805) 929-2783, nipomocow-girl55@yahoo.com  
 Website: <http://omsinc.org>

**August 3-4, 2024 – Roseville, CA**  
 Roseville Rock Rollers Gem and Mineral Society  
 @the Grounds Roseville, 700 Event Center Drive, Roseville, CA 95678  
 Hours: Saturday 10 AM – 5 PM, Sunday 10 AM – 4 PM  
 62nd Roseville Gem, Jewelry, Mineral, and Fossil Show in the huge, AC Roebelen Event Center. Over 70 vendors, inside/out, featuring: Crystals, Fossils, Minerals, Amethyst, Beads, Gemstones, Meteorites, plus Free – Scientific Mineral and Gem ID – bring your rocks for a no-cost Scientific Identification! Fun for Kids in "Education Station", Petrified Wood, Stone carvings, many special exhibits. Demonstrations, Huge Rock Auctions. Lots to see for adults and kids at this family friendly event. General admission \$10.00, Kids – 12 and under Free. Parking \$10. Tickets at the door, online, or grab a discount coupon on our even website: <http://www.rockrollers.com/>  
 Website: <https://www.rockrollers.com/show.html>

**August 17-18, 2024 – Tehachapi, CA**  
 Tehachapi Valley Gem and Mineral Society  
 Tehachapi Senior Center, 500 East "F" St., Tehachapi, CA 93561  
 Hours: 9 AM – 5 PM Both Days  
 Tehachapi Valley 18th Annual Gem, Mineral & Jewelry Show. Mountain Festival weekend – Fun for the whole family,

activities for the kids, raffles, and more.  
 Contact: (661) 972-1117, travis462@outlook.com  
 Website: <http://tvgems.rocks>

**August 24-25, 2024 – Arcadia, CA**  
 Pasadena Lapidary Society  
 Arcadia Masonic Lodge, 50 W. Duarte Rd., Arcadia, CA 91007  
 Hours: Saturday 10 AM – 5 PM, Sunday 10 AM – 4 PM  
 Now in our 75th year, Pasadena Lapidary Society celebrates our 64th Annual Tournament of Gems.  
 Contact: (626) 260-7239, marcia.pls.emails@gmail.com  
 Website: <https://pasadenalapidary.org>

**September 21-22, 2024 – Monterey, CA**  
 Carmel Valley Gem & Mineral Society  
 Monterey Fairgrounds, 2004 Fairgrounds Road, Monterey, CA 93950  
 Hours: 10 AM – 5 PM both days  
 Rocks, minerals, fossils, vendors, gems, silent auction, beads, equipment, exhibits, kind's stuff, and jewelry  
 Contact: susieharlow@gmail.com  
 Website: <http://cvgems.rocks>

**September 28-29, 2024 – San Luis Obispo, CA**  
 San Luis Obispo Gem and Mineral Club  
 Veteran's Memorial Building, 801 Grand Ave., San Luis Obispo, CA 93401  
 Hours: 10 AM – 5 PM Daily  
 Gems By The Sea: Two dozen dealers, Unique handcrafted gifts by local artisans, Demonstrations of lapidary crafts, Children's activities. Free Parking. \$5 admission (12 & under free)  
 Website: <https://slogem.org/gems-by-the-sea/>

**October 12-13, 2024 – Redwood City, CA**  
 Peninsula Gem and Geology Society and Sequoia Gem and Mineral Society  
 Redwood City Community Activities Building, 1400 Roosevelt Ave., Redwood City, CA 94061  
 Hours: 10 AM – 5 PM daily  
 Rocks, Minerals, Fossils, Gems, Jewelry,

Beads, Demonstrations, Kid's Activities  
 Contact: [cci@pacbell.net](mailto:cci@pacbell.net)  
 Website: <https://www.sequoiaagemandmineralsociety.org/sgms-gem-mineral-show.html>

**October 12-13, 2024 – Long Beach, CA**  
 Long Beach Mineral and Gem Society  
 Signal Hill Library, 1800 E. Hill Street, Signal Hill, CA  
 Hours: Saturday 10 AM – 5 PM, Sunday 10 AM – 4 PM  
 2024 Gems on the Hill  
 Contact: (562) 253-1390, lbmineral-gemsociety@gmail.com  
 Website: <http://www.facebook.com/LBMGS>

**October 19, 2024 – West Hills, CA**  
 Woodland Hills Rock Chippers  
 First United Methodist Church, 22700 Sherman Way, Woodland Hills, CA 91307  
 Hours: 10 AM – 5 PM  
 Contact: [barnettcelia53@gmail.com](mailto:barnettcelia53@gmail.com)  
 Website: <http://www.rockchippers.org>

**October 19-20, 2024 – Santa Rosa, CA**  
 Santa Rosa Mineral & Gem Society  
 1351 Maple Ave., Santa Rosa, CA 95404  
 Hours: Saturday 10 AM – 6 PM, Sunday 10 AM – 5 PM  
 Earths Treasurers: Come enjoy the many and varied specimens slabs, rough rock, fine stones and jewelry the earth has created for us.  
 Contact: (707) 849-9551, coons@sonic.net  
 Website: <http://SRMGS.org>

For a more complete listing of shows go to website: [www.cfmsinc.org](http://www.cfmsinc.org)

## August Birthstone – Peridot & Spinel



## STANDARDS OF CONDUCT

This Searchers Gem and Mineral Society was formed for the purpose of banding together a group of congenial persons for the purpose of:

- Studying mineralogy and the earth sciences by means of association with other mineralogical societies and with their members.
- Presentation of public exhibitions, lectures, and similar programs.
- Field trips for exploration, study, and collecting of specimens.
- The encouragement of interest among young people and the fostering of interest in mineralogy and the lapidary arts.
- The procurement and maintenance of collections of minerals, mineral products and related pictures, writings, and other information thereof.

All other means which are appropriate to the accomplishment of the primary objectives above set forth.

To help achieve our purpose, The Searchers Gem and Mineral Society is committed to providing a social environment in which all members and guests are treated with respect and dignity. Each member has the right to attend meetings, club functions, club programs, and to interact with other club members in a non-threatening professional atmosphere that promotes equality and prohibits discriminatory practices, including harassment. We expect that all relationships among members and non-members who interact with our club will be business-like and free of bias and harassment. The activities listed below are not supportive of the Searchers purpose and are therefore strictly prohibited. Any member or guest who exhibits any of the behaviors listed below may be subject to consequences, including termination or denial of club membership.

1. Abusive or threatening language towards a member or guest.
2. Rude or offensive actions or language directed to a member or guest.
3. Verbal or physical harassment of a member or guest.
4. Actual or threatened violence toward any individual or group.
5. Conduct endangering the life, safety, health or well-being of others.
6. Hate speech, bullying or taking unfair advantage of any member or guest.
7. Bringing into a Searchers event dangerous or unauthorized materials such as explosives, firearms, weapons or other similar items.
8. Verbal or physical disruption of Searchers meetings or events.
9. Theft of Searchers property.

Failure to follow the Searchers Bylaws or Standing Rules.

All Searchers members should report prohibited behaviors as outlined above to the Searchers Board of Directors. Upon receiving any such report, the Board will promptly investigate and take appropriate action.

# Searchers Gem & Mineral Society

## General Information

Check our website for unexpected changes in schedule!

[www.searchersrocks.org](http://www.searchersrocks.org)



**General Meetings:** 7 PM, 2nd Tuesday of each month, Jan - Nov  
**Board Meetings:** 6:30 PM, 1st Tuesday of each month, Jan - Nov  
**Workshop:** Thursday 5:30 to 10:00 PM and Saturday 2:30 to 7:00 PM

**Location:** Anaheim Downtown Community Center  
 250 East Center St.  
 Anaheim, CA 92805

**Mailing Address:** Searchers Gem & Mineral Society, Inc.  
 P.O. Box 3492  
 Anaheim, CA 92803

**Website:** [www.searchersrocks.org](http://www.searchersrocks.org)

**Membership Dues:** Individual \$35  
 Each additional household member is \$10

**Valid Jan.1-Dec.31** The dues are prorated for new members. If new members sign up from October to December, their dues are good for those months, plus the entire next year.

**Bulletin:** Submissions due 3rd Friday of the month via e-mail to: [editor@searchersrocks.org](mailto:editor@searchersrocks.org).

Bulletin distributed 1st week of each month. Mail exchange bulletins to the editor:  
 Searchers —Linda Horn Editor  
 P.O. Pox 3492  
 Anaheim, Ca. 92803

**Charter Date:** April 20, 1958  
**Affiliations:** California Federation of Mineralogical Societies  
 American Federation of Mineralogical Societies

Click here for a link to the CFMS newsletter <https://cfmsinc.org/newsletters/>

Check out our "new" Facebook page:  
<https://www.facebook.com/groups/searchersrocks/>



# THE NEVADA MINERAL & BOOK COMPANY

<http://minbooks.net/>

342 S. Tustin Street • Orange, CA 92866

Ph. 714-633-1549

Hours may vary, please call before coming.

