

7-1993



KENDALL DESSPAIN  
12271 CHOISSER ROAD  
GARDEN GROVE, CA 92640



SEARCHERS GEM AND MINERAL SOCIETY, INC.  
Established June 20, 1958  
Mailing Address: P.O.Box 3492, Anaheim, CA 92804

CLUB OFFICERS

President	Merle Howe	529-3613
1st Vice President	Herbert Beckman	778-1496
2nd Vice President	Phil Martinez	633-5328
Secretary	Beth Pelfrey	774-2754
Treasurer	Margaret Neeley	535-2030
Federation Delegate	George Mitchum	897-2407
Director	Lola Tapia	776-9815

Note: List of Committee Chairpersons will appear  
in Searchers Roster

AFFILIATIONS: California Federation of Mineralogical Societies  
American Federation of Mineralogical Societies

SEARCHERS: The Searchers Gem and Mineral Society, Inc. meets on  
the second Tuesday of each month at the Anaheim Memorial Hospital  
Medical Office Building, 1211 W. La Palma Avenue, Anaheim.  
Meetings begin at 7:30 P.M. Visitors are always welcome.

Membership dues are accepted January through September. Adult  
Members: \$10.00 each, and Junior members \$2.00 each.

Field Trips are usually held on the third weekend of each month.  
These are announced monthly. Trip maps, added activities, time  
changes and other pertinent information will be published in the  
bulletin.

Board Meetings are held on the fourth Wednesday of each month.  
These will be held in the boardroom in the basement of the Anaheim  
Memorial Hospital Medical Office Building at 7:30 P.M.

WORKSHOPS: Workshops have been temporarily cancelled.

Silversmithing - Temporarily cancelled.

REQUIREMENT: Items for the bulletin must be in the hands of the  
editor by the first (1st) Tuesday of each month. Please mail all  
items to:

Jeanne Howe, 1482 Ponderosa Ave. Fullerton, CA 92635

## PRESIDENT'S MESSAGE

Jeanne and I went to Ventura to the Federation Show. It was a wonderful show. Had a good time and met a lot of Searchers there. Got a lot of good ideas. It was well worth the trip.

The following weekend, we took Jim and Joan Everitt's trophy and ribbon to them in Sun City. They surely have a beautiful place there. Jim looks like he will be in Lapidary heaven with all of his work areas.

The Fair is on now, and we still need more help. We will give you a parking pass and an entry pass, all for three hours of helping watch people who attend the Gem and Mineral Department. (Usually it is a matter of asking them not to bring food or drink into the building.) The passes are good for all day, and you can go out and see the Fair and take in the evening concerts free. The reason for our club helping, is to get people at the Fair interested in our hobby and let them know we have a club in the area.

Please call Todd at 714/708-1618, and offer to help. It is not too late, as he will drop tickets in the mail at night and usually you have them the next day.

Merle

## CLUB CALENDAR

July 18	Picnic, Irvine Park, see attached.
July 28	Board Meeting
August 10	General Meeting
August 21	Barbeque, Yorba Regional Park, see attached

## AREA SHOWS

Would you believe July 13 to August 10 seems almost devoid of shows in our area! The choices are no farther south than San Francisco

## TRAVEL SAFETY TIPS

Pickpocket Teams Love Crowded Elevators--A friend of mine, aware of New York City's reputation, guarded her purse well while on the streets and had no problem. Inside her luxury hotel she let her guard down and her purse was emptied within seconds while riding the hotel's elevator. The other "guests" who entered the lift behind her and squeezed her close to the professional pickpocket were part of a well rehearsed team. Beware of crowded elevators anywhere. Even the hotel security people were of no help on this one.

From Travel Companions

1

HERE IS #3. Lots to see, so Goodday Mates from West Australia on our fair dinkum holiday.

We left Darwin on the North and stopped at Kakadu National Park. It is the largest park in Australia. There we took a river cruise on the Alligator River to see salt water crocodiles. An early explorer mistook what they were. The salties get up to 18 ft. long and are dangerous to man and everything else. Lots of signs warning of danger. We saw some mid-sized ones as well as four week olds.

Had to drive back South before we could head West. At Katherine we took a river cruise up the Katherine Gorge. It was very scenic with high rock walls. Trees alongside the river were full of large black fruit bats called flying foxes. They feed at night on the abundant supply of insects. In the evening we went to a CORROBOREE, which is an Aboriginal dance and showed some of their traditions.

Heading West we entered West Australia, the biggest state, which comprises about one third of the nation and only 1.5 million population. Most of the population is at Perth - one million - so the rest is sparsely settled and remote.

Kununurra was the first town we came to. We'll never forget it as it was there we shared the shower with big bright green tree frogs clinging to the walls and ceiling. At least they kept their eyes closed.

Continuing West, we drove around the edge of the Flinders Range, a vast area of relatively unexplored mountains. Fitroy Crossing was a stopping place to take another river cruise up the Geike Gorge, which was a long inland barrier reef. The Fitroy River is the 3rd largest flowing river in the world, after the Ord and the Amazon. During the wet season, the land is covered with water and travel on the highway stops.

We finally reached the coast and the Indian Ocean at Broome. There we toured an Oyster Pearl farm. They showed us how they planted the pearl seeds that caused the pearls to form.

Now we are following the coast highway south. Carnarvon was a stopping place to take in a banana plantation. From there they supply most the bananas for Australia.

Arrived at the big city of Perth finally. There are lots of vineyards as well as other farms. It is a beautiful city and easy to get around in. One of the suburbs is

Fremantle, where we saw the building of a replica of the sailing ship Endeavor. That was Captain Cook's ship, in which he explored Australia and New Zealand waters in the middle 1700's.

We now head East for South Australia, a good distance away. Along the way we stop at Kalgoorlie, a booming gold town. Gold was discovered in 1893, so we were there when they were celebrating their centennial. They claim their miracle mile is the richest gold area in the world. Lots of big nuggets were found. Now it is an open pit mine.

Norseman was the last town to stop at in West Australia. I was able to get in some fossicking. Found some golden moss agate, opalite, and moss opalite. Took enough to do some trading later.

We covered a lot of ground this month, about 3,000 miles. Next we head east for Lightning Ridge in New South Wales for a rock show. That is only 2,500 miles away!

Until next month,

Marvin and Jaque

#### OLD SHOW BIZ

Any of you who exhibited at our 1993 show, but did not attend the Awards banquet and have not received your ribbon, please contact Ken Despain 714/750-8066. He is eager to get them out to the people who have earned them. Thanks.

#### REFRESHMENTS

Mae Freedman is in charge of our refreshments this evening. Next month Joyce Martinez has volunteered to do the honors.

#### IN SICKNESS AND HEALTH

Henry Freedman had a double surgery, one Friday, one Saturday which had to do with access for his dialysis. He is recovering well, and Henry and Mae want to say thank you for all the cards, and calls.

Bill Keyes got a pacemaker on June 28th, and is doing well. Bobby is on a new program which we all hope will give her some relief from a neurological disorder which attacks her muscles. They both are appreciative of the calls and letters they have received from you Searchers.

We are sorry to learn that Bob, Elmer and Mary Jane Parsons' son is suffering from cancer in his right lung. They have gone to Tulsa to be with him.

On a happier note, Marge Jordan is continuing to improve, and was able to attend the Ventura show and enjoy both the banquet and the Editors' Breakfast.

PUBLIC LANDS

As of June, the California Desert Legislation battle continues. Our Desert Congressmen are planning to introduce an alternate bill again.

Other numbers that have surfaced during the past few months are: RS 2477, pertaining to roads and access routes that have been established by various County, State or other use; S-3107, pertaining to collection of fossils; and several bills related directly to mining.

In addition to the various bills that would directly impact our hobby, the advance of endangered species management plans appear designed to curtail most educational use of federal lands. The desert tortoise management plan being formulated by the Fish and Wildlife Service states that no rock collecting or botanical collecting will be allowed without permit. Attempts to determine the particulars involved in obtaining a permit have not been successful.

It is understood that other management plans are being planned. All are designed to protect the "endangered species."

If we overlap the maps of the planned Wilderness, National Parks, and endangered species management, very little area is left. Close to 80% of the normal areas we have used in the past will be restricted in some way.

A new bill, of which I do not have the number, has been introduced to provide for the preservation of scientifically significant paleontological resources, and for other purposes.

Elmer Parsons

The Lux family wishes to thank all of you for your messages, phone calls and expressions of sympathy in the loss of their son, Michael.

George & Alice

FROM THE MINUTES OF THE JUNE MEETING

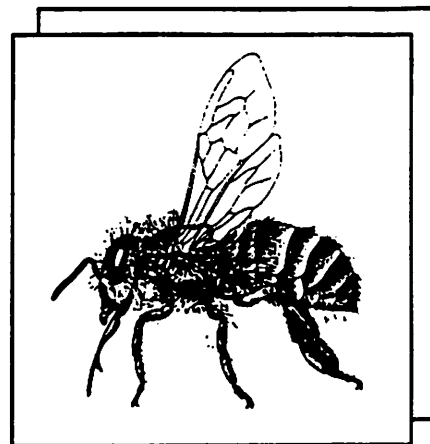
The awards for trophies and Cases were as follows:

- TROPHIES:** Larry Richey, 5 years  
Jim and Joan Everett, 15 years  
Hal and Doris Pelfrey, 20 years
- Guest Cases:** Veterans, 2 cases  
Luis de los Santos
- Member Cases:** Grant Miller  
Ed Zinn  
Conrad Cone, 2 Cases  
Russ Korn, 1st Case  
Clare Gagnon  
Nancy Davis  
Dick and Nancy Reed, 1st Case  
George Arvanitas  
Lola Tapia  
Floyd and Margaret Neeley  
Alice Lux  
Beth Pelfrey, 1st Case  
Hal and Doris Pelfrey  
Larry Richey  
Marvin Mog  
Allen Silverstein, 2 Cases  
Connie Van Kampen  
Jay and Marie Cole  
Ken Despain  
Lowell Disney  
Wes Miller  
Merle and Jeanne Howe  
Jim Williamson  
Walter Mroch  
Joyce Whalin  
Burt Whalin, In Memorium, by Joyce  
Ken Landers  
Qwen Anes  
Marge Jordan  
George Mitchum  
Elizabeth Madsen and father Chris, 1st Case  
Dee McLain  
Jan Gillette

Nickel or Chrome? To tell the difference between nickel and chrome plating, blow on it. If the moisture clears away without iridescence, it is chrome; if it leaves a little rainbow, it is nickel

Quarry Quipe, May 1993

# AFRICANIZED HONEY BEE



The Africanized honey bee, erroneously known as the "killer bee," is moving into south Texas and the southern United States. Scientists are not certain how far north the bee will spread, but they do know that it will cause problems wherever it resides in large numbers.

This insect, which has been migrating from South America since the 1950's, looks just like a domestic honey bee, but it is not nearly as good natured. In fact, it has a bit of a quick temper.

The domestic bee has lived in harmony with human beings for hundreds of years. It has been bred for gentleness and good honey production.

By contrast, the Africanized bee is a "wild" bee that is not comfortable being around people or animals. Any colony of bees will defend its hive, but Africanized bees are very defensive. These bees are more likely to sense a threat at greater distances, become more upset with less reason, and sting in much greater numbers.

The Africanized bee's "killer" reputation is greatly exaggerated, but it does have some basis in fact. In isolated instances, people and animals have been stung to death. Most often, the person who died was not able to get away from the bees quickly. Animal losses have occurred for the same reasons. Pets and livestock were tied up or penned when they encountered the bees.

Africanized bees do not roam in giant swarms looking for victims to attack. Like most animals, these bees react defensively only when they feel threatened.

Beyond public safety, the Africanized honey bee may have impact on beekeepers. Commercial beekeepers could go out of business if Africanized bees drive out or breed into their domestic colonies.

Because honey bees provide 80 percent of the pollination required by agricultural crops, a reduction in the number of beekeepers could lead to reduced yields in food crops as well as a decline in honey production.

Beekeepers are working closely with state and federal agencies to minimize the impacts of the Africanized bee.

Your best protection against the Africanized bee is to understand how it behaves and react accordingly.

Bees "swarm" to establish new hives in the spring and fall. Bees are most active then. You may find bees setting up housekeeping where you live literally overnight.

Individual bees gathering pollen on flowers or masses of bees clinging together in swarms generally will not bother you. However, bees are more likely to be defensive after they have established a colony and started raising young.



MEMORIAL DAY TRIP

THE EXTENDED FIELD TRIP WAS GREAT! TOO BAD MORE OF YOU MEMBERS DID NOT MAKE IT. OUR FIRST STOP WAS TABOOSE CREEK WHICH IS JUST SOUTH OF BISHOP. WE GOT THERE BEFORE THE MEMORIAL DAY WEEK-END, AND GOT A GREAT SPOT RIGHT ON THE CREEK. KEN & MARY NELSON, JIM & JOAN EVERITT, AND FLOYD & MARGARET NEELEY WERE ALREADY THERE. WE ALL SETTLED IN AND GOT READY FOR A FEW DAYS OF R&R. KEN & JIM HAD ALREADY BEEN FISHING AND CAUGHT SOME TROUT. THEY FISHED UP AND DOWN THE CREEK, WHICH HAS PLENTY OF WATER FROM THE SNOW MELT, AND FISHING WAS GOOD FOR THEM. IT TOOK ME 6 DAYS TO CATCH MY LIMIT, BUT I DON'T CARE, IT WAS FUN. WALT MROCH AND HIS BROTHER SHOWED UP A FEW DAYS LATER AND WE ALL WENT INTO INDEPENDENCE TO LOOK AT A ROCK COLLECTION LEFT TO A MAN BY HIS PARENTS. IT WAS A HUGE COLLECTION AND HE WANTED TO SELL IT ALL, BUT WAS TOO MUCH FOR ANY OF US. EVERYONE BUT MYSELF BOUGHT SOMETHING.

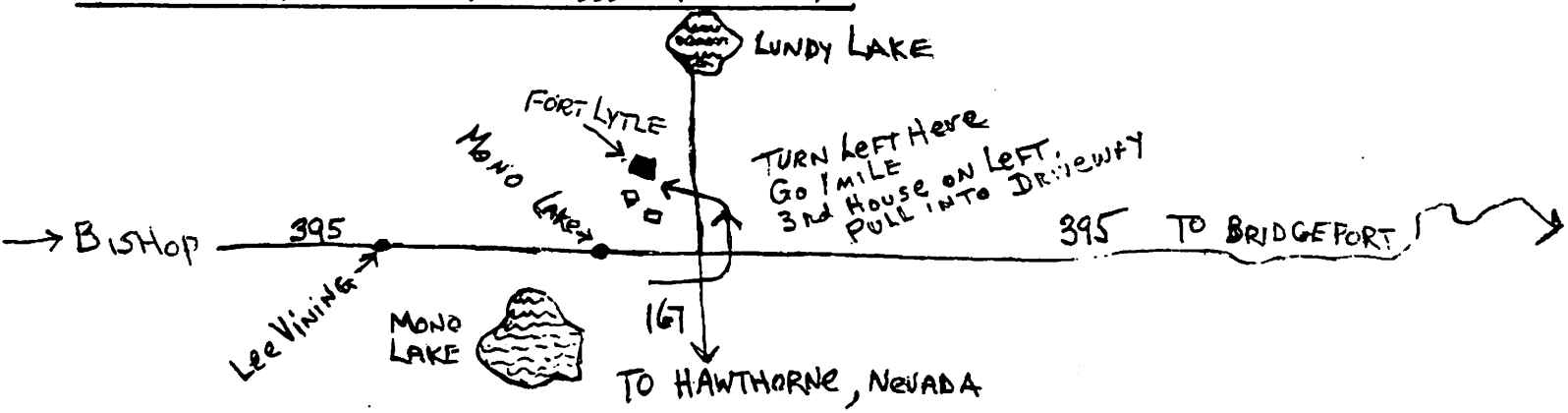
THE NEXT DAY WALT AND HIS BROTHER TOOK US TO BISHOP WHERE WE PICKED UP TONY & DIANA LIRA AND WE DROVE A SHORT DISTANCE OUT OF TOWN FOR SOME GROSSULAR GARNET DIGGING. WE ALL GOT SOME NICE SPECIMENS. WALT & BROTHER PARTED WAYS WITH US AND WENT ON UP NORTH TOWARD HALLELUJAH JUNCTION FOR MORE DIGGING.

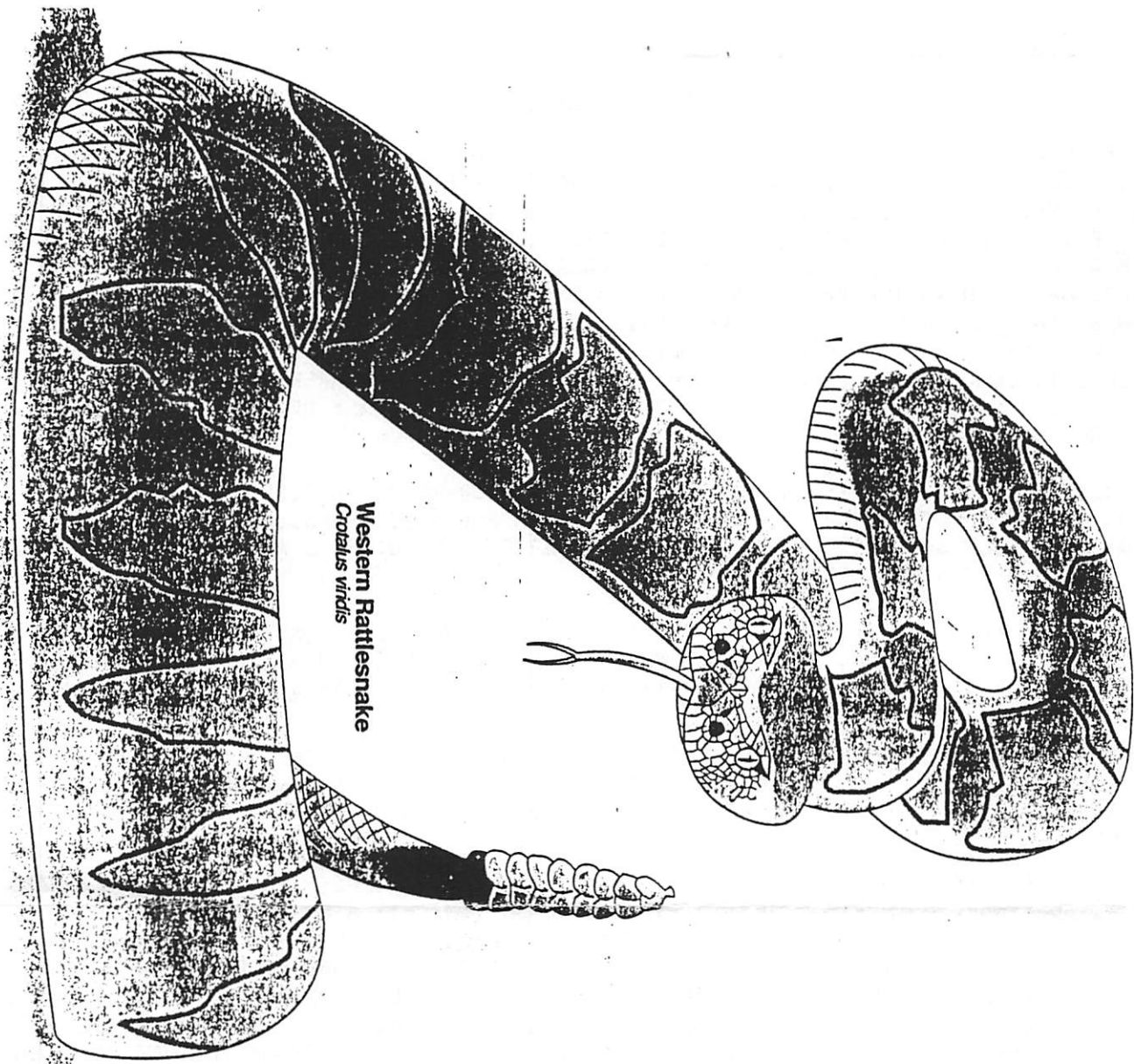
WE ALL DROVE BACK UP TO BISHOP FOR "MULE DAYS". IT WAS GREAT, NOT A MOTORIZED VEHICLE IN THE PARADE. IT WAS ALL MULE DRAWN BY MULES FROM ALL OVER THE U.S. AFTER THE PARADE WE VENTURED TO THE CITY PARK WHERE THE ARTS AND CRAFTS BOOTHS WERE SELLING EVERYTHING IMAGINEABLE.

TWO OF OUR NIGHTS IN CAMP, WE HAD BBQ TROUT DINNERS WITH ALL THE TRIMMINGS. WE HAD OUR NIGHT MEALS TOGETHER LIKE A POT LUCK. A COUPLE OF NIGHTS KEN & MARY DECIDED TO TRY TEACHING US "LINE DANCING" WHICH WAS A LOT OF FUN FOR US AND THE REST OF THE CAMP WATCHING US.

WE ALL LEFT CAMP BRIGHT AND EARLY ON THE 31ST WITH THE OTHERS ALL RETURNING TOWARD HOME AND WE CONTINUED ON NORTH. JUST OUTSIDE OF BISHOP WE HIT A HARD RAINSTORM THAT CONTINUED ON WITH US. WE STOPPED IN AT LEE VINING AND DECIDED TO TRY TO FIND OUR X-CLUB MEMBERS RON & CONNIE LYTLE. WE HAD NO DIRECTIONS OR A PHONE NUMBER WITH US AS WE ORIGINALLY HAD NOT PLANNED ON GOING IN THIS DIRECTION. WE STOPPED OFF AT THE VISITOR CENTER IN MONO LAKE (QUITE NICE AND A MUST) GOT DIRECTIONS FROM A GAL WORKING THERE TO THEIR PLACE AND DROVE RIGHT TO IT WITH NO HESITATION. THEIR HOME IS ON THE WAY TO LUNDY LAKE AND EASY TO SPOT. IT'S A HUGE LOG CABIN, THE LARGEST ONE ON THE MOUNTAIN CALLED "FORT LYTLE". WE PULLED IN THE DRIVE-WAY AND CONNIE WAS QUITE SURPRISED TO SEE US. RON WAS OUT CHOPPING WOOD AT THE TIME. WE SPENT THE NEXT 2 DAYS AND NIGHTS VISITING WITH THEM, GETTING CAUGHT UP ON ALL THE CLUB NEWS. TAKING A TOUR OF THE CABIN, THE GARAGE ALONE HAS 1850 SQ.FT. IN IT TO ACCOMMODATE THE CAR, MOTORHOME, AND A LARGE WORK AREA. THE CABIN IS QUITE BEAUTIFUL, WITH A GREAT VIEW FROM EVERY ROOM. RON DESIGNED IT HIMSELF. THERE IS ENOUGH ROOM ON THEIR PROPERTY WHICH CONSISTS OF 10 ACRES FOR AT LEAST 10 VEHICLES. YOU COULD PARK NEXT TO A CREEK AND FISH.

TO ALL CLUB MEMBERS WHO KNOW RON & CONNIE LYTLE - THEY WOULD LOVE TO HAVE SOME COMPANY. THEY HAVE MORE THAN ENOUGH ROOM FOR YOU TO PARK, WHETHER YOU GO UP ALONE OR IN A SMALL GROUP. THE PEOPLE AND THEIR PLACE ARE BOTH BEAUTIFUL! DROP THEM A LINE AT P.O.BOX 187, LEE VINING, CAL. 93541 (NO PHONE).





## If you've been bitten...

Most snake bites will leave two rings of teeth marks, but rattlesnakes will leave one or two deep puncture holes in addition. Every bite should command immediate attention. Although 20 percent to 30 percent of rattlesnake bites are dry (no venom is injected), medical attention should be sought as soon as possible. Consult the American Red Cross for the latest accepted methods for treatment.

Fang marks



Poisonous snake bite      Harmless snake bite

### Symptoms

**Mild** The earliest symptom is pain or burning at the site of the bite. Shortly after, the area begins to swell. Bleeding usually produces a purple or green discoloration, but this change may take several hours to appear.

**Moderate** A more severe venom injection will result in nausea and vomiting, numbness or tingling sensation about the mouth or tongue, sometimes extending into the scalp or involving the fingers and toes. Swelling and discoloration extend further from the site of the bite.

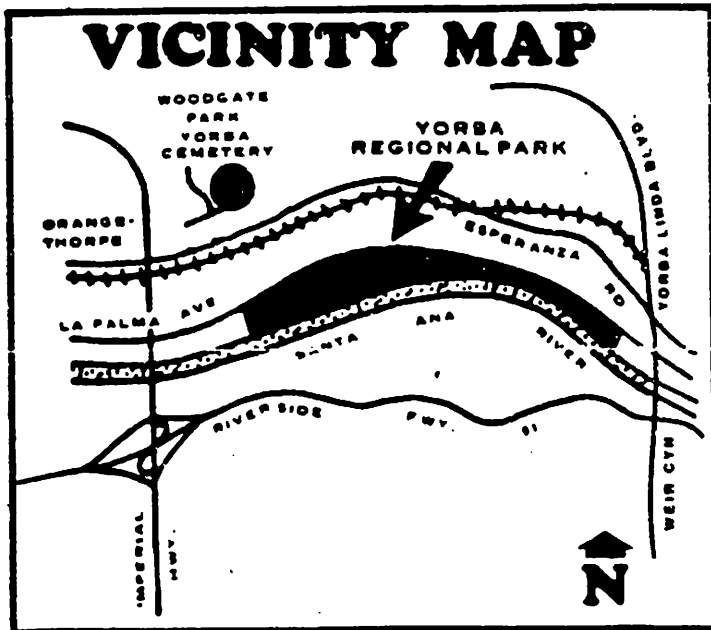
**Severe** Subject becomes weak and dizzy and develops signs of shock, particularly cold, clammy skin and a weak pulse.

### Immobilize

When a subject can be hospitalized in a short time, the only treatment needed is limiting the spread of venom with a light, 3/4 inch constriction band. Make sure it is loose enough so that one finger can slip between the band and the extremity. Immobilize the extremity with a splint, experts say. No other measures, ice, electric shock from a stun gun or particularly incision or oral suction, should be attempted.

The immobilized extremity should be above the level of the heart, and the person should be transported to the hospital with as little effort on his or her part as possible.

**Suction:** A new product, the Extractor, from Sawyer Products, is recommended for snake bites. It's easy to use. Just follow the directions.



BARBEQUE - SATURDAY AUG. 21

Yorba Regional Park  
7600 E. La Palma Ave.  
Anaheim, PH 970-1469

Operating Hours 7AM to 9PM  
Parking \$2.00 per vehicle,  
per entry.

Searchers Gem and Mineral Society assumes no responsibility for injuries or damage due to accidents, carelessness, or Acts of God. Searchers & guests assume all risks during club activities.

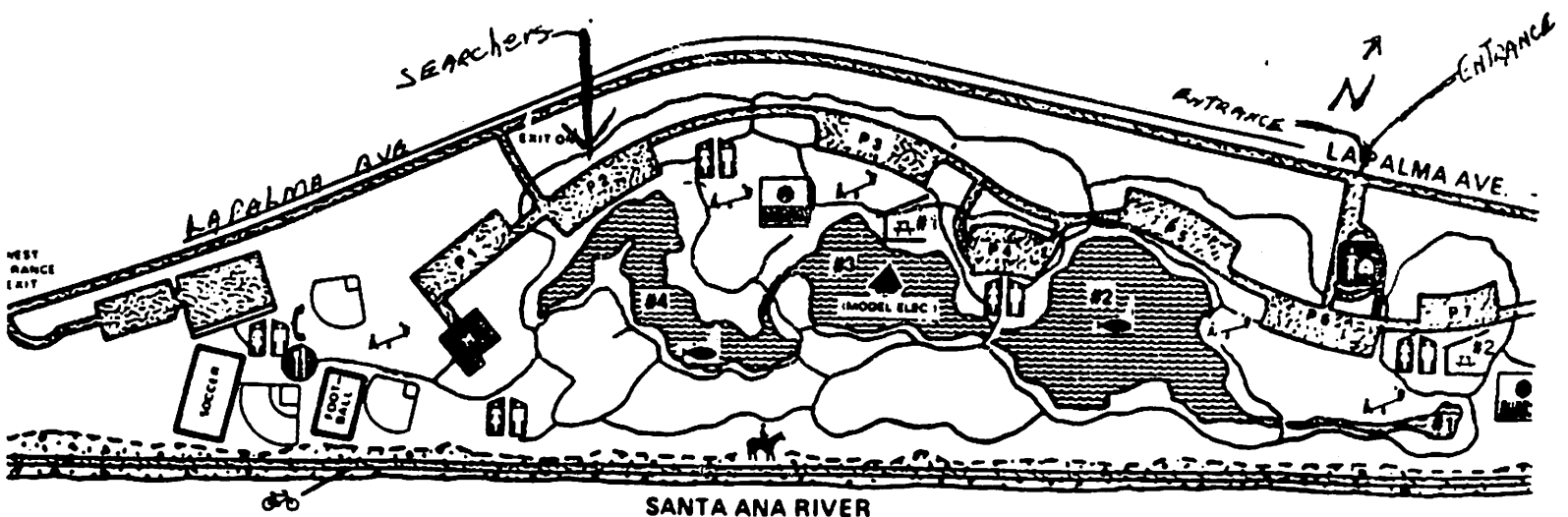
Phil and Joyce will be at the park when it opens to reserve the Searchers spot. (anyone who would like to join them, please do.)

There is no electricity, so those of you who want coffee or tea must bring your own. The Club will furnish soft drinks. NO INTOXICANTS ALLOWED.

We will have BBQs, Charcoal and Starter. YOU BRING WHATEVER YOU WANT TO BBQ, (steak, chicken, hamburgers, hot dogs). ALSO PLEASE BRING A DISH TO SHARE, i.e. potato salad, green salad, baked beans, veggies or dessert. If BBQing HOT DOGS or HAMBURGERS BRING YOUR OWN BUNS. We will have the condiments. WE WILL BEGIN BBQING AT 1:00 p.m.

BRING YOUR PLATES, EATING UTENSILS AND FOLDING CHAIRS. If you have a folding table, bring it since the park tables are stationary and we may need extra.

We look forward to seeing y'all on the 21st. Phil



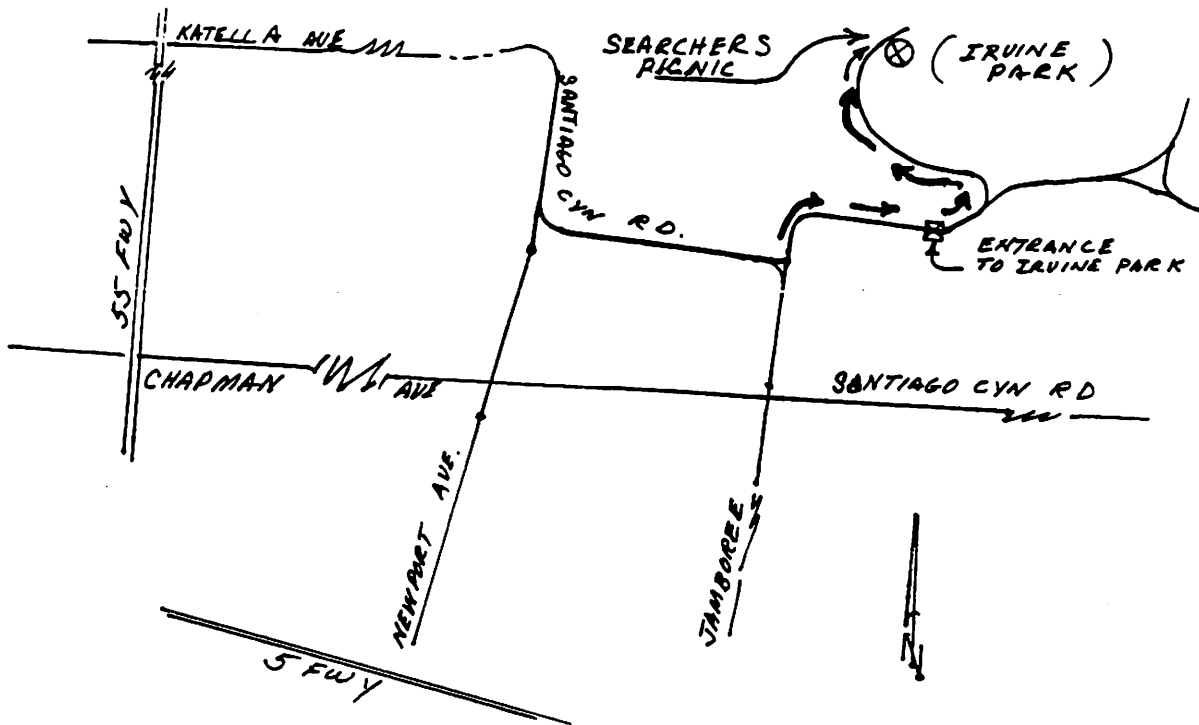
SEARCHERS ANNUAL PICNIC Sunday July 18, 1993 Irvine Park

The Searchers Annual Picnic will be held July 18th. Mark your calendars. POTLUCK WILL BE SERVED AT 1:00 P.M.

YOU need to bring food for a potluck, (your favorite dish), plates, eating utensils, lawn chairs, games and anything else that's appropriate for a picnic.

THE CLUB will furnish soft drinks and watermelon. There are NO electrical outlets. If you want coffee or tea, you must bring your own.

Phil and Joyce Martinez will be at the park at 7:00 AM. If you care to join them for a Continental Breakfast, bring your goodies and come by 8:00 AM. Info call 529-3613 (Howe)



Drive east on Chapman to Jamboree Road, (it deadends at Chapman) Turn left; stay to right side, make a small jog, then a left turn into the park.

Or drive Katella (becomes Villa Park Rd, then Santiago). Stay on this till you get to Newport Ave. Continue to next signal. Then turn left and back to the right and you're at the Park entrance.

Searchers Gem and Mineral Society assumes no responsibility for any injuries or property damage due to accidents, carelessness or Acts of God. Members and guests assume all risks during Club activities.